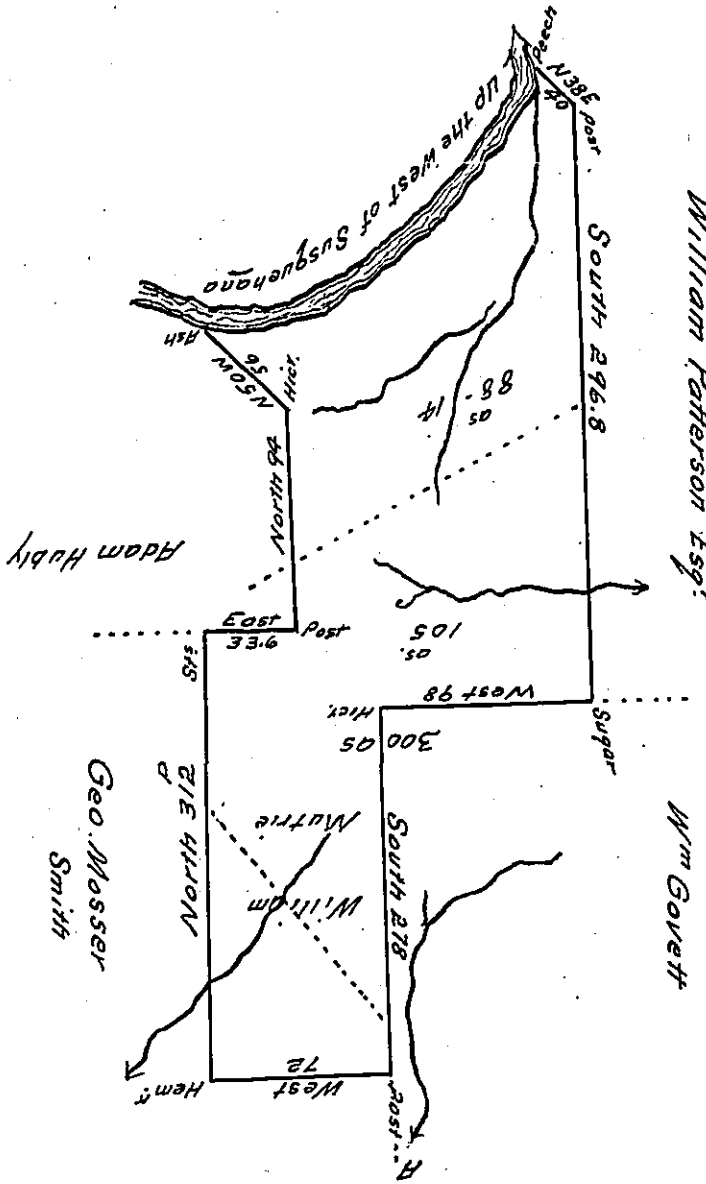


FORM NO. 1.

Courses and Distances  
Down the River from the  
Ash to the Beech

S72E... 18  
N.80E... 50  
N.54E... 44  
N.41E... 50  
N.30E... 40 to Beech  
202'



*Draught of a Tract of Land Situated in Pike Township*

*Clearfield County Containing Three Hundred Acres and the Usual Allowance  
of Six Per Cent for Roads &c. Surveyed the 17<sup>th</sup> Day of Octo<sup>r</sup> 1828 in Pursuance  
of a Warrant Dated the 7<sup>th</sup> Day of Septe<sup>r</sup> 1773 Granted to William Mutrie for  
300 acres*

*To Gabriel Heister Esq<sup>r</sup>*

*David Ferguson*

*Surveyor General*

*Note the above Survey Interferes with Joseph Roberts<sup>88-14</sup> with  
Hugh Roberts<sup>105</sup> with George Messer Smith Warrant<sup>1793</sup> Dated 1793 Surveyed  
1793 and with (~~Wm Govett 80 as 105 Warrant Dated 1773 Surveyed 1773~~)*

*Occupied by Thomas M<sup>c</sup>Cracken*

*DF*

*Lines found Except A.B.*

*IN TESTIMONY that the above is a copy of the original remaining on file in  
the Department of Internal Affairs of Pennsylvania, made  
conformably to an Act of Assembly approved the 16th day of  
February, 1833, I have hereunto set my Hand and caused  
the Seal of said Department to be affixed at Harrisburg,  
this Twenty-eighth day of December 1908*

*Henry Howell*

*Secretary of Internal Affairs.*